

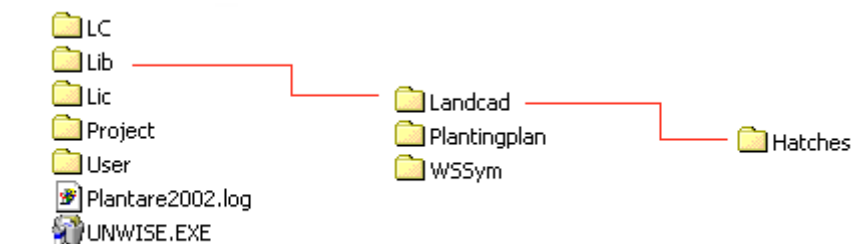
# WS·LANDCAD



*PlantARE*

## Hatches Update Instructions

Due to changes in the hatch and symbol libraries between Plantare 2000.01 and 2002, this hatch update provides the complete hatch library for Plantare 2002. Please download the Hatch Update and overwrite your Hatches file (in Lib → Landcad)



Please note the following:

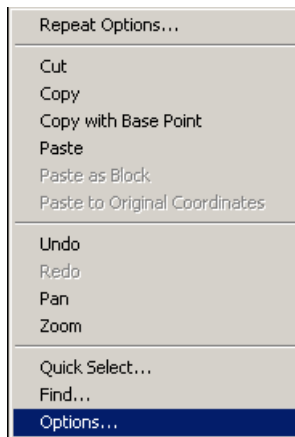
You will notice that 2 hatch files contain the same hatch pattern yet are named differently. The hatch Brass from Plantare 2000.01 had been renamed to Trans in 2002 and the hatch Grass to Gras01. The reason that both versions are available is that this Hatch Update enables version 2000.01 users to retain the paths of those projects created with version 2000.01.

**For all new projects, please use the Plantare 2002 names i.e. Trans and Gras01.**

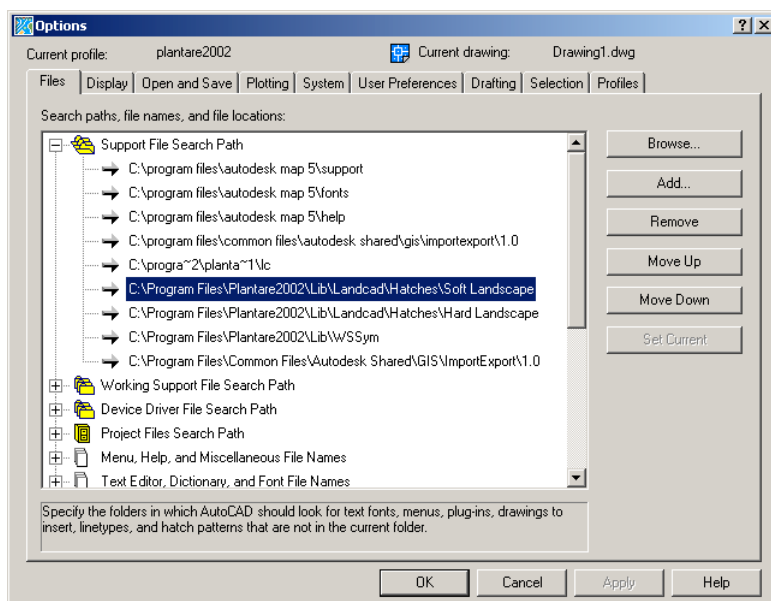
A number of the other hatches have been updated so it is highly recommended that ALL Plantare 2002 users download the Hatch Update.

Plantare 2002 users who have **not** used version 2000.01 should delete the files Brass.pat; Brass.sld; Grass.pat; Grass.sld (Hatches → Soft Landscape)

After you have done this open AutoCAD and go to Options.



Add the paths of the Hatch File (both Hard Landscape and Soft Landscape) to the Support File Search Path.



If you have any questions please contact your local distributor/dealer or Widemann System.